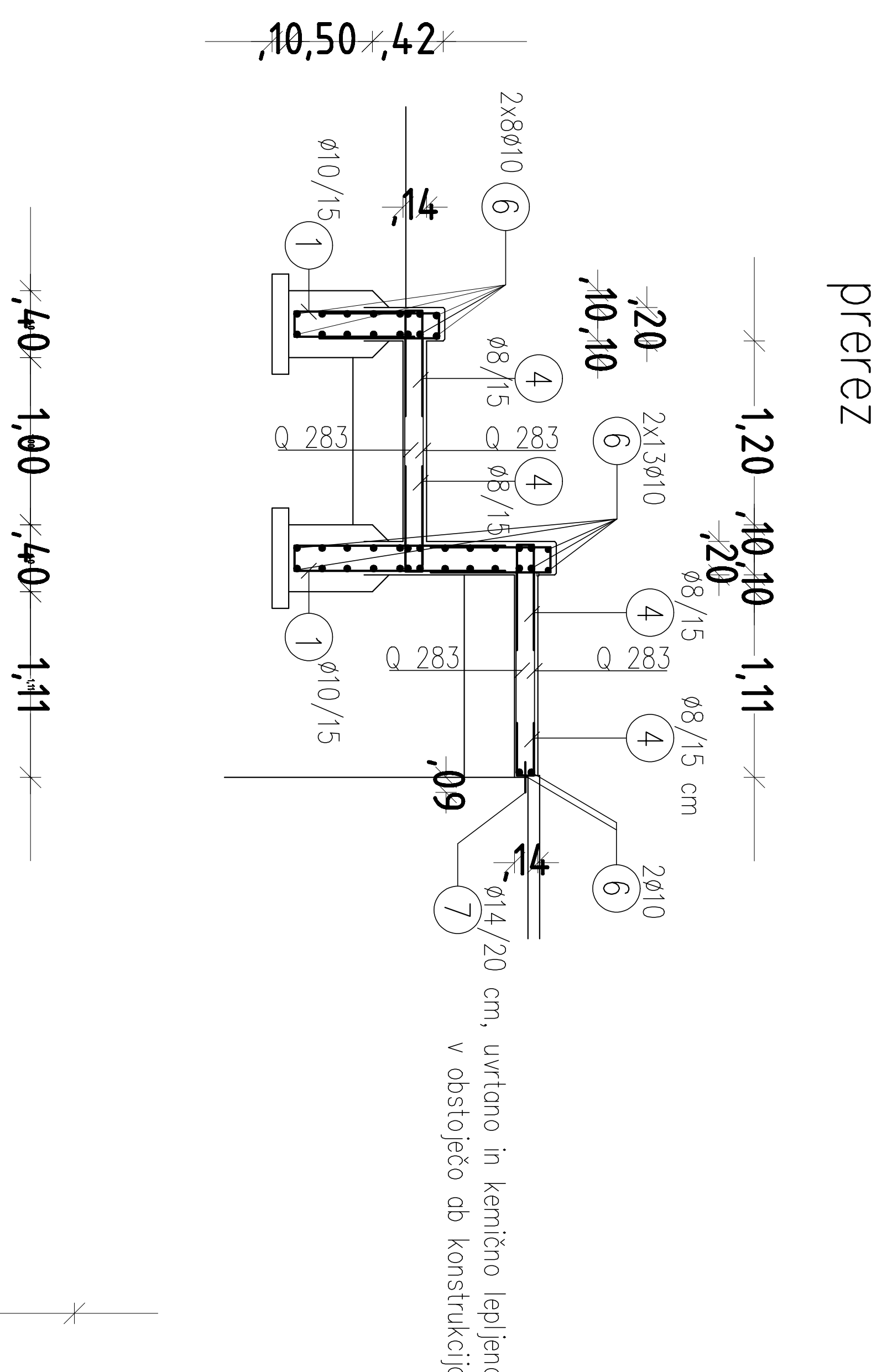
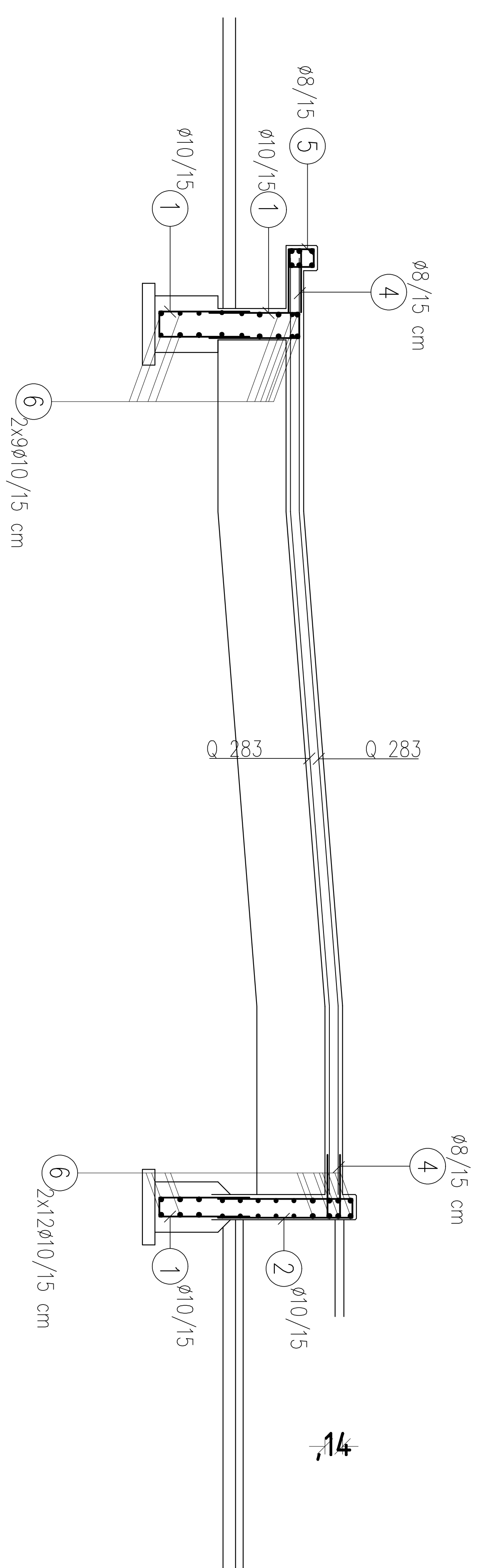
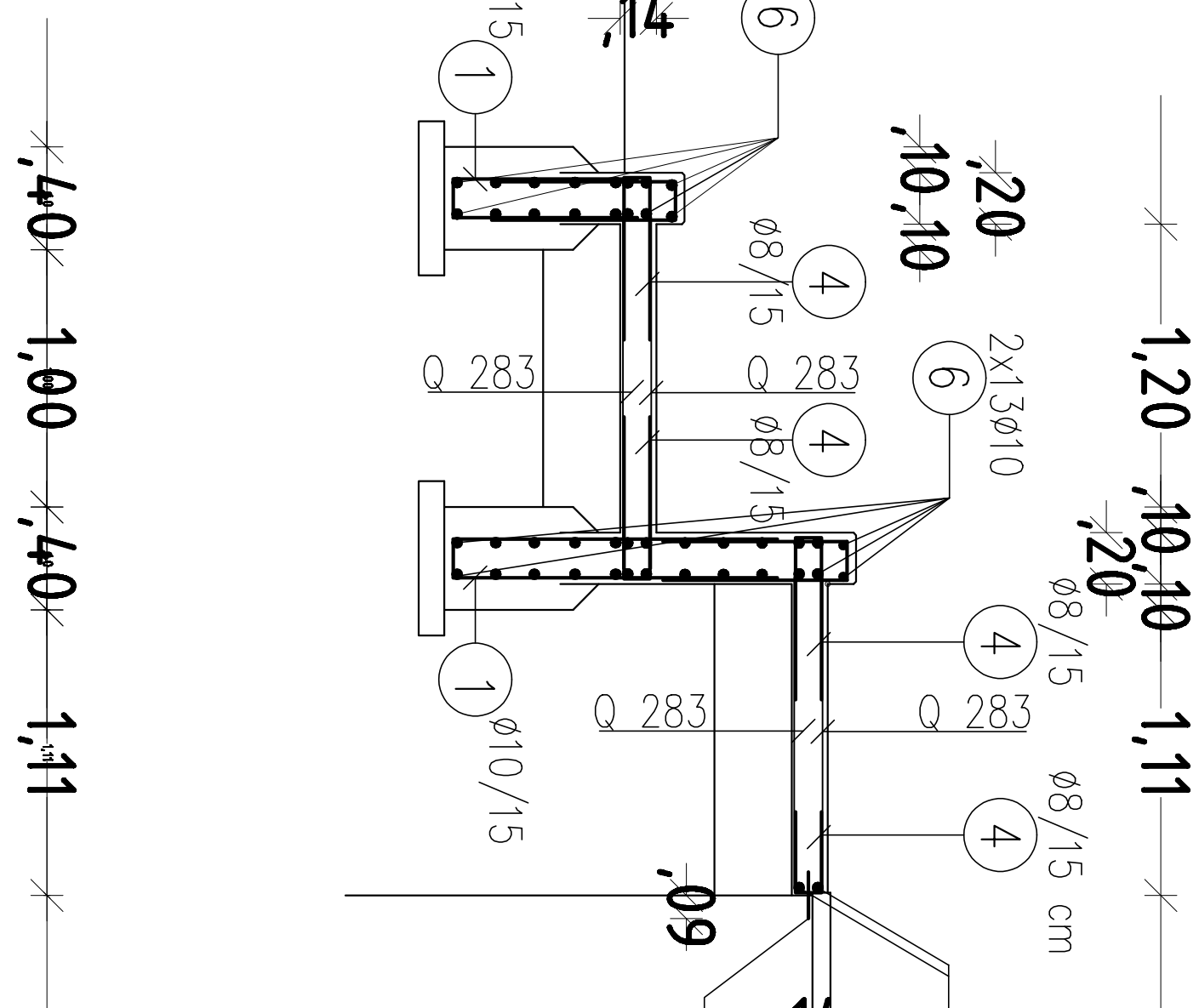


vzdolžni prerez – zgornja rampa

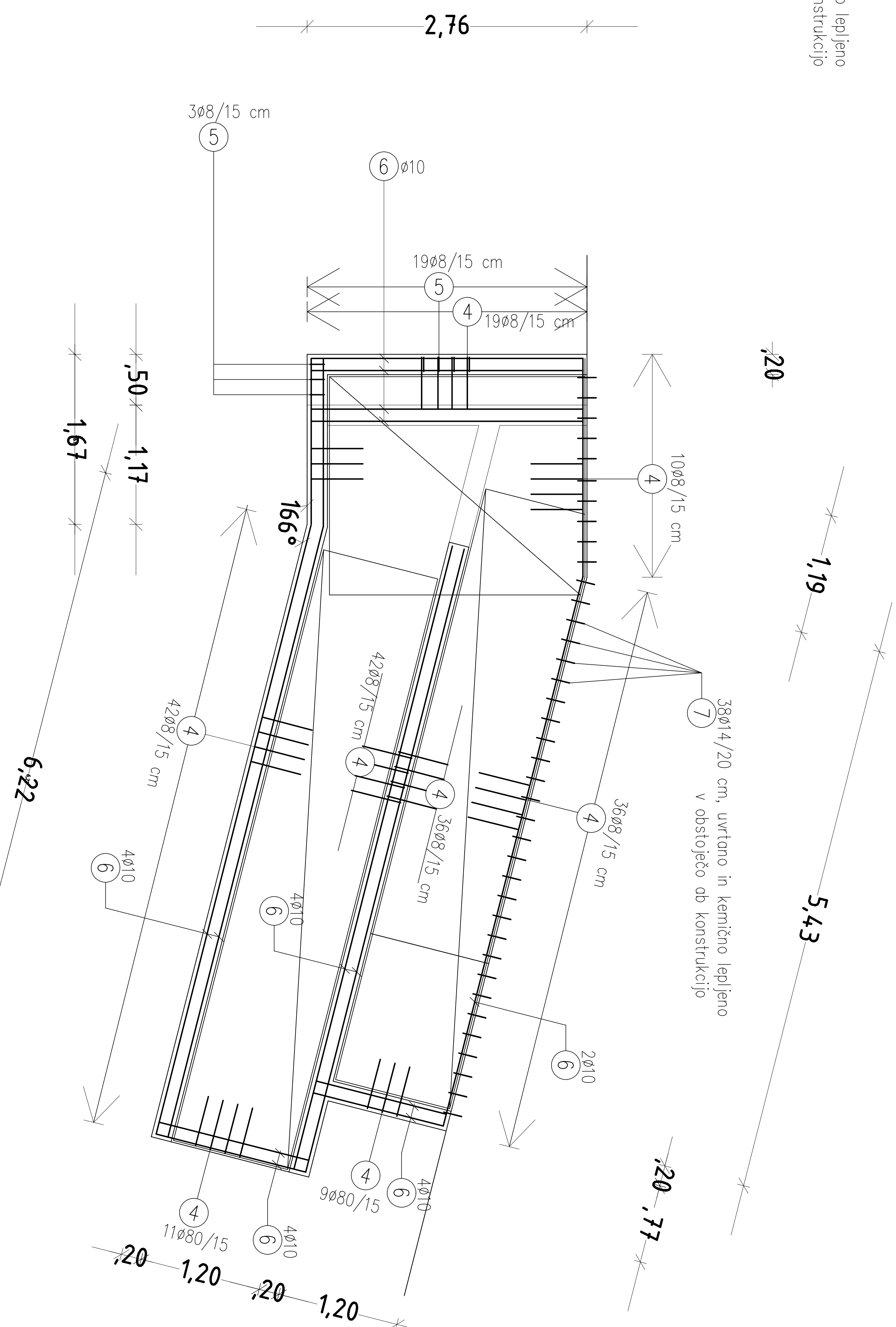


```
preerez
```

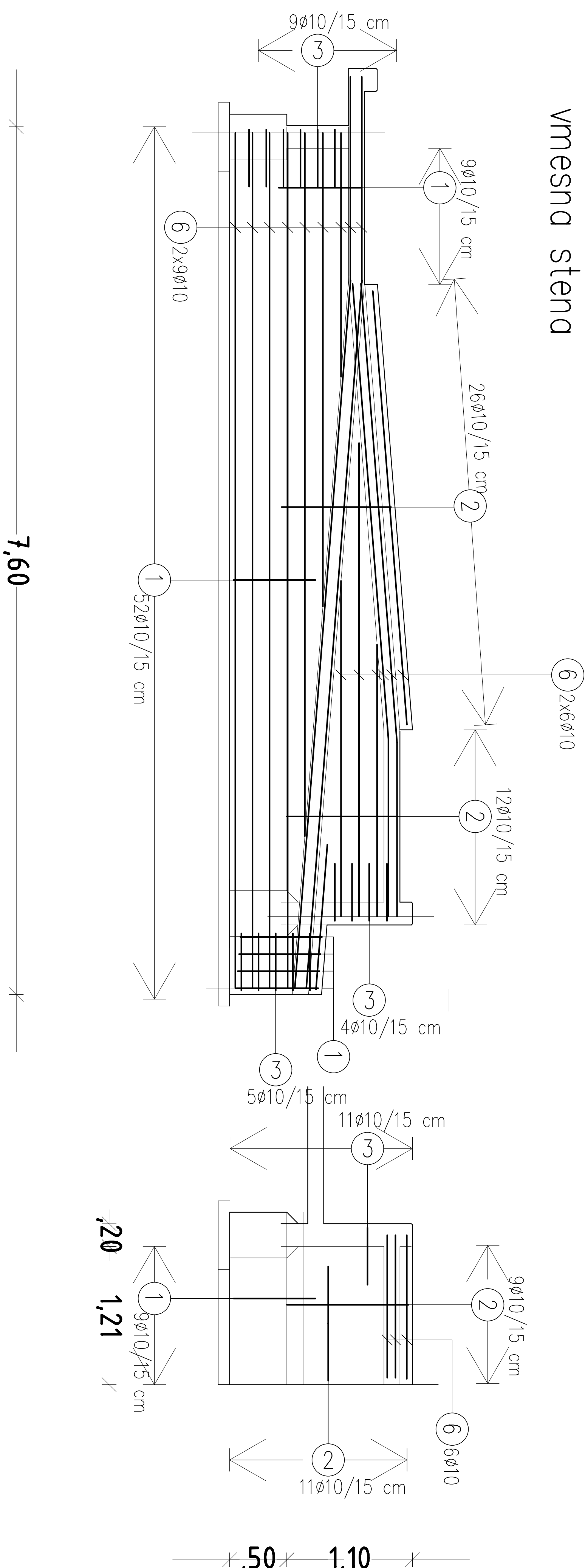


uvrtno in kemično lepljena
v obstoječo ob konstrukcijo

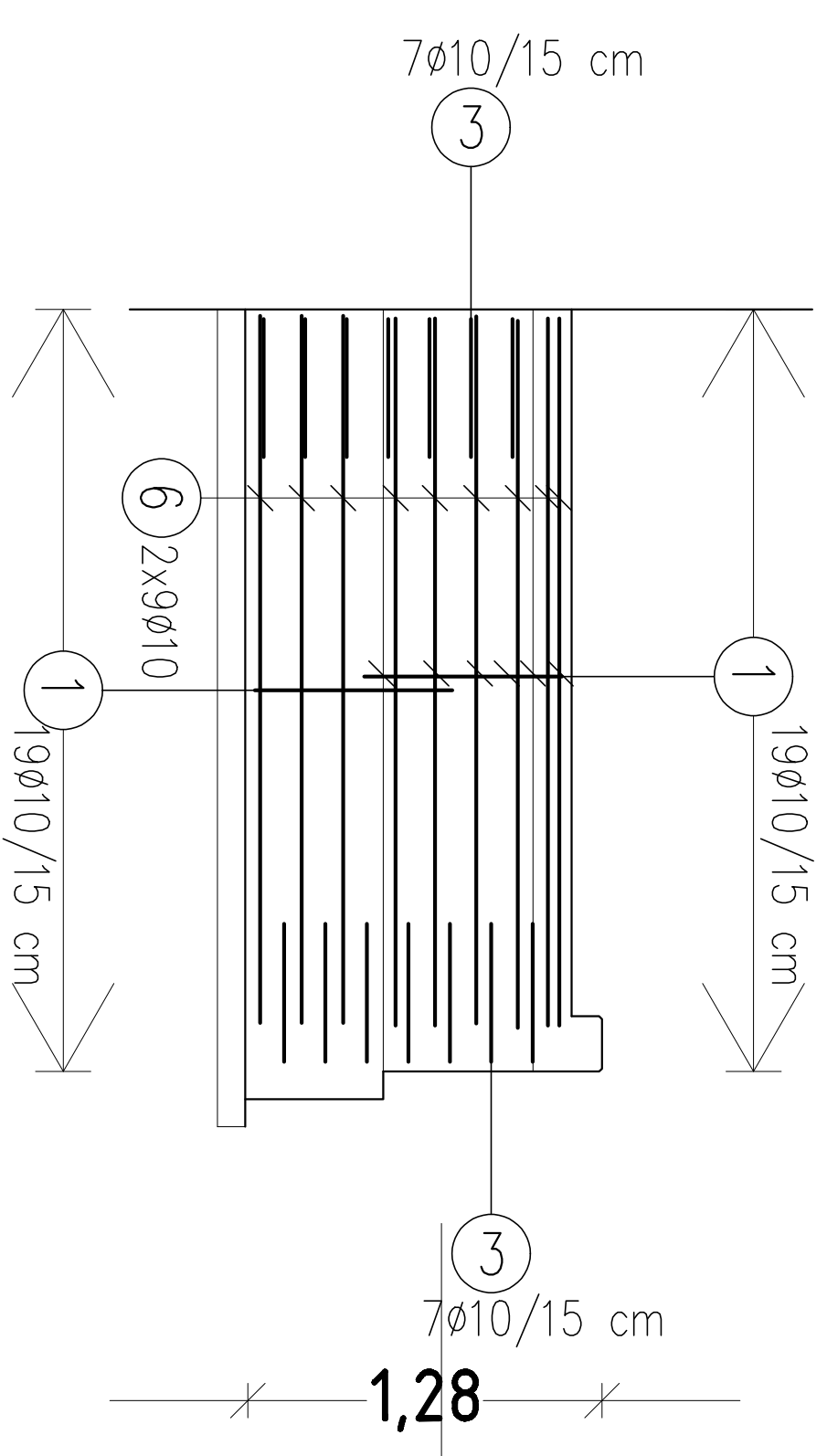
tloris plošče d = 14 cm



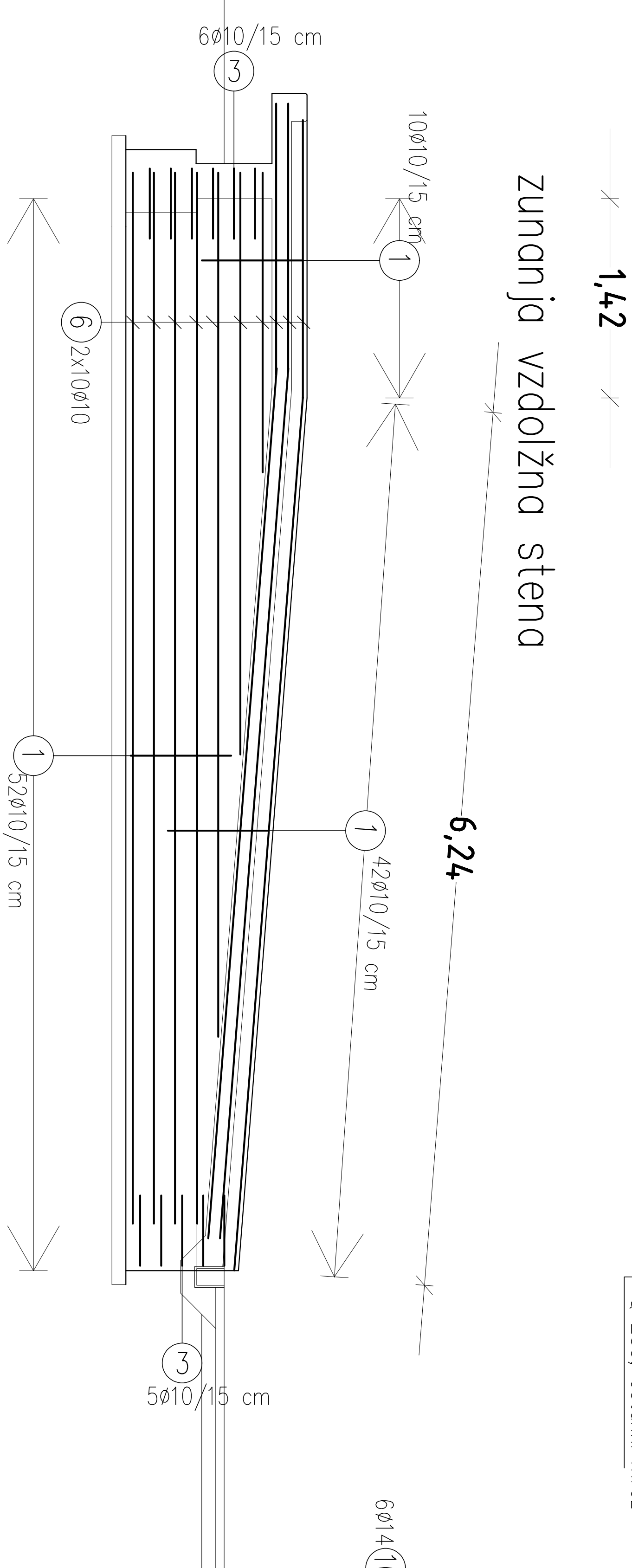
vzdolžni prerez – spodnja rampa



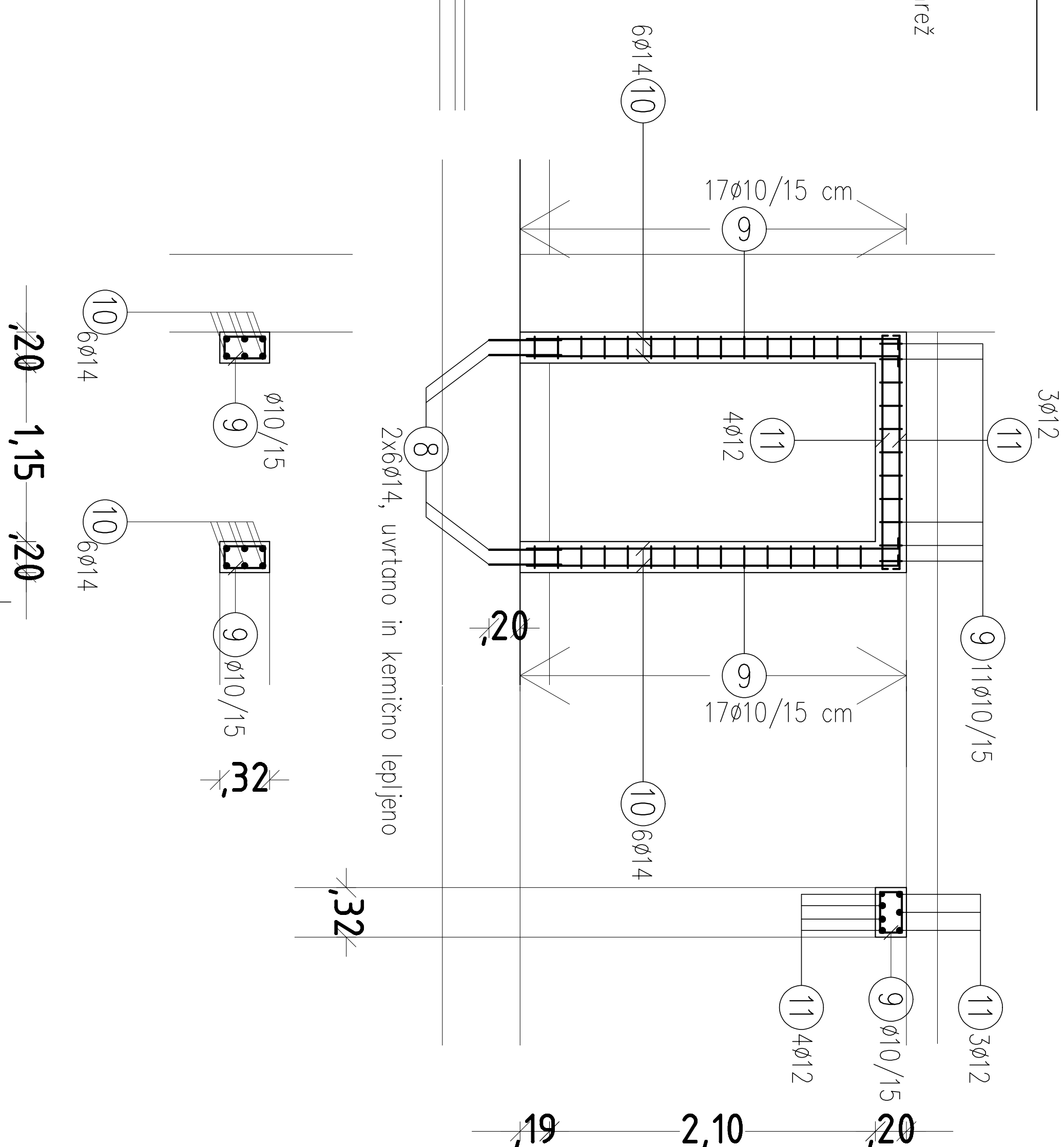
zunanjja prečna stena



zunanjja vzdolžna stena



ab portal v kleti



$\textcircled{1}$ $\varnothing 10$ L=1,54m, kom: 216
 $\textcircled{2}$ $\varnothing 10$ L=2,24m, kom: 47
 $\textcircled{3}$ $\varnothing 10$ L=1,12m, kom: 65
 $\textcircled{4}$ $\varnothing 8$ L=1,03m, kom: 216
 $\textcircled{5}$ $\varnothing 8$ L=0,80m, kom: 22

ARMATURNÉ MREŽE Q283, dim 2,15 X 6,00 m, KOM 3

AB KLANČNA, AB PORTAL
-ARMATURNI NAČRT, M 1:25
C 25/30, S 500

[illegible]